



---

## Vitae M96S

---

**Automated Liquid Handling workstation**

---

## Product Overview

Vitae M96S is a fully automatic liquid handling workstation for 96-well microplate pipette operations. The instrument can automatically complete pipette tip filling, reagent adding and sample transferring. The system is fast, efficient, accurate, and cost-effective. It can simplify the tedious and repetitive manual loading operation, reduce errors, and ensure the accuracy and reliability. The operation of the instrument is simple and safe.



## Product Features

### High throughput

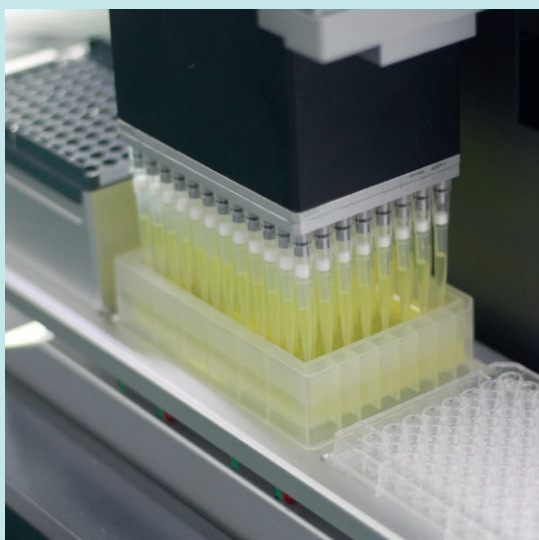
- The processing of liquid samples pipetting is carried out simultaneously, eliminating the non-parallelism of manual operation.
- 384-well plate pipetting only requires four times to avoid duplication or missing operations.
- 8-channel single-column gradient dilution, adding liquid at the designated position of the well plate.
- The instrument runs fast and efficient.

### High precision

- The pipette is precisely positioned and the micro-hole can be added inside by against the wall.
- Controllable pipetting speed and editable pipetting process
- The 96 channels are highly consistent, which can control the depth of entry of the pipette.

# Liquid sample pipetting Helper

## Three different range of pipetting volume



### M96S-1000 (Max 1000 $\mu$ L, range from 20-1000 $\mu$ L)

Volume	Accuracy	Repeatability
1000 $\mu$ L (1000 $\mu$ L Tips)	$\pm 10\mu$ L	$\leq 0.5\%$
100 $\mu$ L (1000 $\mu$ L Tips)	$\pm 2\mu$ L	$\leq 2.0\%$
100 $\mu$ L (200 $\mu$ L Tips)	$\pm 1\mu$ L	$\leq 0.8\%$
20 $\mu$ L (50 $\mu$ L Tips)	$\pm 1\mu$ L	$\leq 4.0\%$

### M96-200 (Max 200 $\mu$ L, range from 2.5-200 $\mu$ L)

Volume	Accuracy	Repeatability
200 $\mu$ L (200 $\mu$ L Tips)	$\pm 1\mu$ L	$\leq 0.5\%$
20 $\mu$ L (50 $\mu$ L Tips)	$\pm 0.5\mu$ L	$\leq 2.0\%$
5 $\mu$ L (50 $\mu$ L Tips)	$\pm 0.5\mu$ L	$\leq 3.0\%$

### M96-30 (Max 30 $\mu$ L, range from 0.5-30 $\mu$ L)

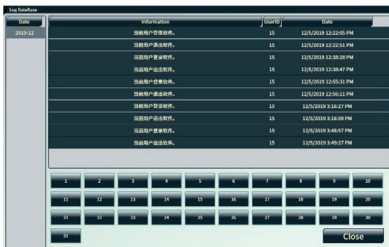
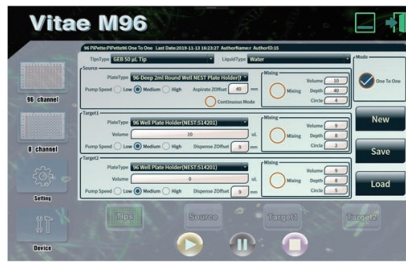
Volume	Accuracy	Repeatability
10 $\mu$ L (20 $\mu$ L Tips)	$\pm 0.2\mu$ L	$\leq 1.0\%$
2 $\mu$ L (20 $\mu$ L Tips)	$\pm 0.1\mu$ L	$\leq 4.0\%$
0.5 $\mu$ L (20 $\mu$ L Tips)	$\pm 0.1\mu$ L	$\leq 5.0\%$

## Good compatibility

- Three range of pipetting volume: 20-1000 $\mu$ L, 2.5-200 $\mu$ L, 0.5-30 $\mu$ L, to meet the different needs.
- Multi-mode: single liquid dispensing, continuous liquid dispensing; support operations such as blowing out, reverse aspirate, suspended adding, etc.
- Friendly touch screen control operation interface, make operation easy.
- Compact designing with Small size, the instrument can be placed in a biological safety cabinet and ultra-clean bench.
- Adapt to a varieties of different SBS standard microplates, some pipetting parts can also be customized, compatible to temperature control adapter, meet the requirements of placing temperature-sensitive samples.

# Pioving®-Multifunctional control software

workflow is clear



High automation and simple operation

The software Interface is simple and easy to operate

The software is easy to learn, easy to use, operate by pen touch or hand.

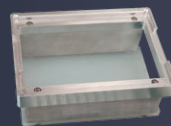
With process program storage, automatic memory function, one-key calling of the saved program.

Automatic recording of all operating data of the instrument, compliance with GLP standards

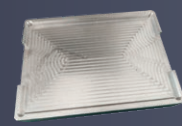
## Some accessories



96-tip adapter

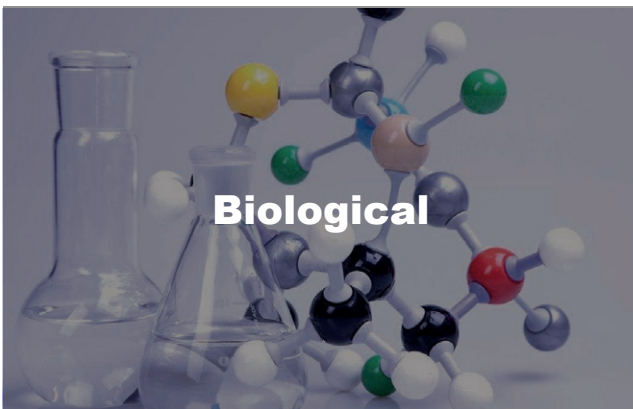
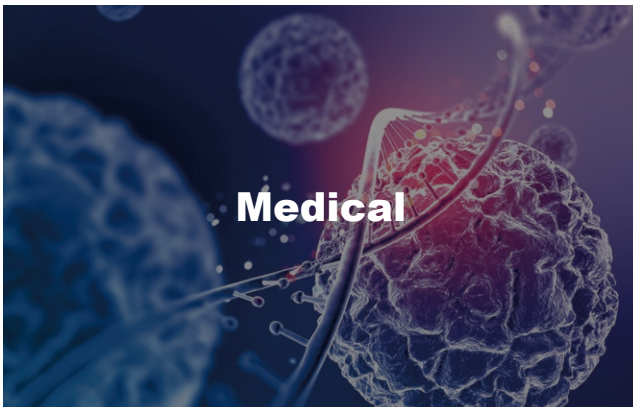


ELISA plate/96-well plate adapter



384-well plate adapter

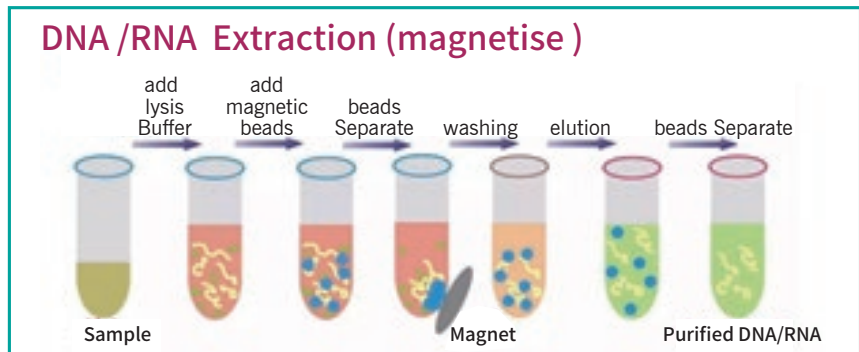
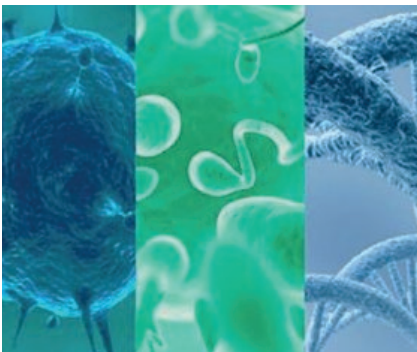
## Application



## Typical application

### Extraction of Nucleic Acid

The Vitae M96 is suitable for the extraction of nucleic acid for samples from multiple sources including blood, urine, growth medium, etc. It can effectively services for clinical trials, laboratory testing, molecular diagnosis, etc.



### Enzyme-linked immunosorbent assay

96 channels for one-time pipetting, it is fast and can ensure strict timeliness such as ELISA Test requirements, and the uniform operation make the test more accurate.

Knowledge Optimized Laboratory



RayKol Group

Add: Unit 6F, NO. 176Xinfeng Road, HuizhiZone, Torch  
High-tech Zone, Xiamen

Mail: [info@raykolgroup.com](mailto:info@raykolgroup.com)

<https://www.raykolgroup.com>